



L3DFX

DESIGN.

CREATE.

DELIVER.



L3DFX is an award-winning creative studio specializing in the design and fabrication of theming, props, structures, immersive environments, and interactive experiences for theme parks, waterparks, global attractions, sports teams, travel exhibitions, unique corporate builds and installs, and much more.

WE CAN CREATE ANYTHING YOU CAN IMAGINE.

Achievements

MEMBERSHIPS & AWARDS



CERTIFICATIONS

- ★ A.W.S. WELD CERTIFIED
- ★ AUTHORIZED FEDERAL CONTRACTOR
- ★ STATE OF ILLINOIS PUBLIC CONTRACTOR
- ★ REGISTERED WITH ILLINOIS DEPARTMENT OF HUMAN RIGHTS
- ★ VETERAN OWNED

TABLE OF CONTENTS

MEET THE LEADERSHIP TEAM	2	Nerf Challenge.....	18
CAPABILITIES	3	Transformers	20
PARTNERS & CLIENTS	4	Jurassic World	21
PROJECT GALLERY	5	Six Flags Sidewinder Safari	22
Disney's Magic Happens Parade.....	5	Kennywood Area 412 and Spinvision Entry.....	23
The World of Barbie.....	7	Dr. Seuss Experience	24
Disney 100 Exhibition	9	Carnival Cruise	25
Universal's Super Nintendo World, California	11	Stadium Network Studio.....	26
NFL/Sports Teams	12	Raging Waves Quokka Play Area	27
Chicago Cubs Marquee Studio Experience.....	14	Angad Arts Hotel	28
The Search for Snoopy	16		

CONTACT

DIRECT: Emily Popovich, Chief of Sales And Business Development • Emily@L3DFX.com • 703.850.4115
640 Remington Blvd., Suite C • Bolingbrook, IL 60440

L3DFX.com Create@L3DFX.com 815.727.5454

Meet **the** Leadership Team



PAUL CIESIUN
Founder and President



HANI PAKROO
Chief Project Officer



EMILY POPOVICH
Chief of Sales and
Business Development



JESSICA POIRIER
Wonder Woman



**MATTHEW HOWLAND
PALMER**
Creative Coordinator



JOHN LEVY
Lead Industrial Designer



JESS THUER
Lead Mechanical Engineer



GRANT SAUTER
Lead Programmer



RON MARTIN
Lead Fiberglass Fabricator



JESUS CRESPO
Lead Fabricator



JIM SHAMHART
Lead Welder

STUDIO DEMOGRAPHICS

50+ EMPLOYEES

50,000 sq. ft. FACILITY

Capabilities

DESIGN.

- Conceptual Design
- Design for Manufacturing (DFM)
- Digital Asset Creation (3D Modeling, Sculpting, and Rendering)
- Digital Animation
- 2D Graphics (Branding, Copy, and Illustration)
- Engineering (Electronics and Electrical, Mechanical, and Structural)
- Interactive Digital Experiences (App Development)

CREATE.

- Electronics (Design, Fabricate, Programming)
- Fiberglass Fabrication (Mold and Cast)
- Carpentry/Millwork
- Full Fabrication Capabilities
- CNC Machining and Wire Cutting
- Detail Painting and Powder Coating
- Lighting Design and Layout
- AWS Certified Welding Fabricator
- 3D Printing
- Silicone and Plaster Molding
- Resin Casting
- Plastics Fabrication (Acrylic, Nylon, HDPE, LDPE, UHMW, PLA, etc.)

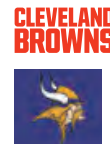
DELIVER.

- On-site Construction
- Site Supervision and Support
- Installation
- Documentation and Instructions
- Logistics and Shipping
- Prop, Scenic, and Film Support
- Production and Special Event Support

HI-TECH EQUIPMENT AND SERVICES

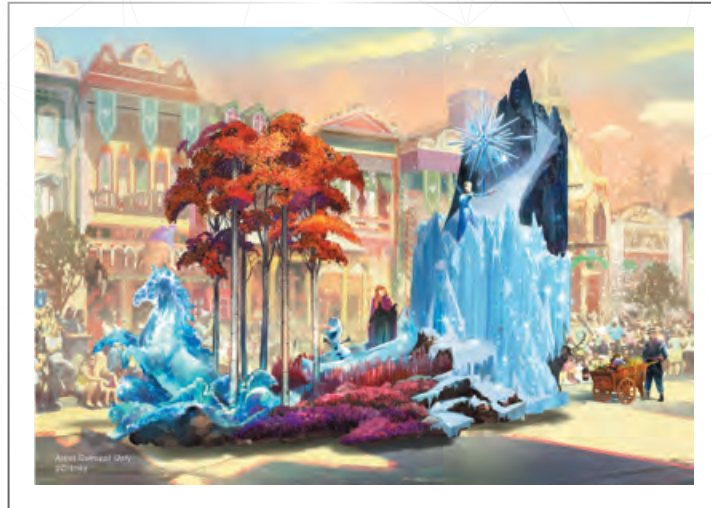
- Mechatronics
- Digital App Development
- Projection Mapping
- SFX

Partners & Clients



Project Gallery

DISNEY'S MAGIC HAPPENS PARADE Frozen 2 Float



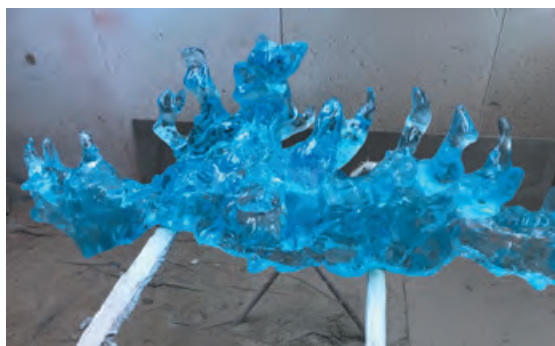
■ Client's concept



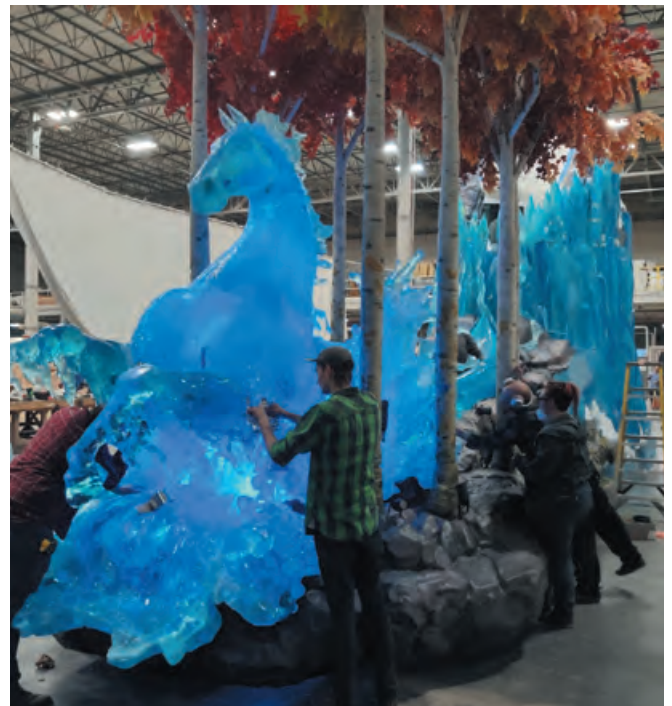
■ Foam master



■ Ice in sunlight



■ NOKK mane



■ L3DFX provides Factory Acceptance Testing to ensure client buy-off before it reaches the site. For this unique project, we provided Z-Brush sculpt and Site Acceptance Testing (S.A.T.) as per the client's needs.



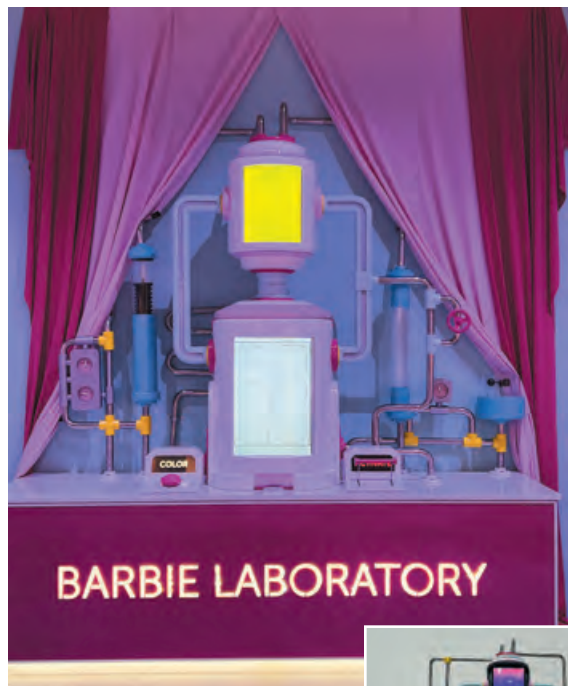
■ For this project, L3DFX had to invent a new resin that was clear, UV resistant, and if on fire, would self-extinguish to meet Disney's performance standards. The team truly pulled out all the stops to bring this magical float to life.



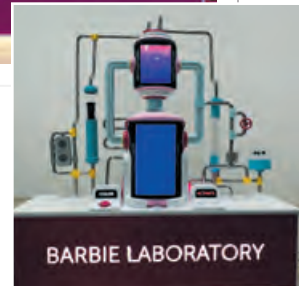
THE WORLD OF BARBIE



■ The “World of Barbie” was a great opportunity to utilize a wide range of our fabrication capabilities. From coated foam, to cast fiberglass and machined iconic symbols, Barbie would be proud of our team.



■ The traveling show also featured three unique custom interactive apps to help guests get in touch with their inner Barbie girl.





■ Barbie's Intergalactic Space Station was an out-of-this-world build, topped off with the technology that allows guests to travel to galactic destinations of their choice.



■ Barbie's TV center

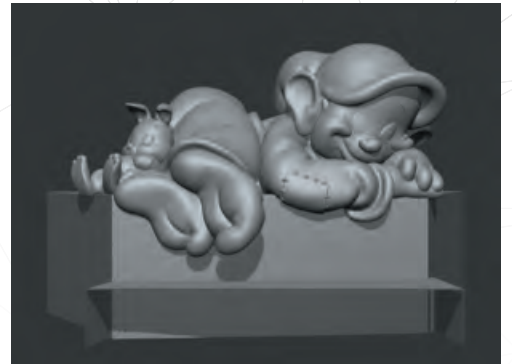
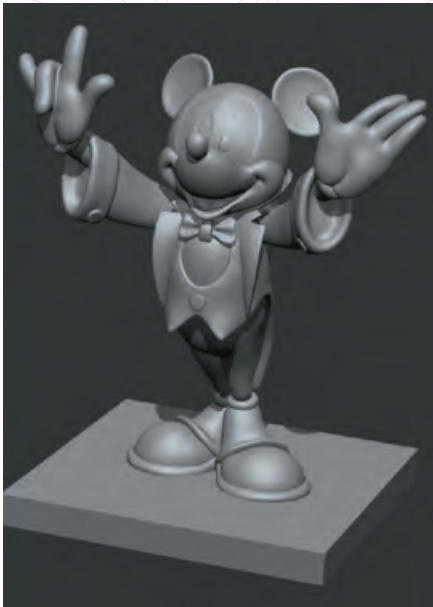


■ Dreamhouse interior



■ Fiberglass water fountain

DISNEY 100 EXHIBITION



■ Our team started by digitally sculpting Mickey, Goofy, and Dopey. We then fabricated two identical life-sized copies of each character. One set is now on display in Philadelphia and the other in Germany as part of a traveling exhibit.





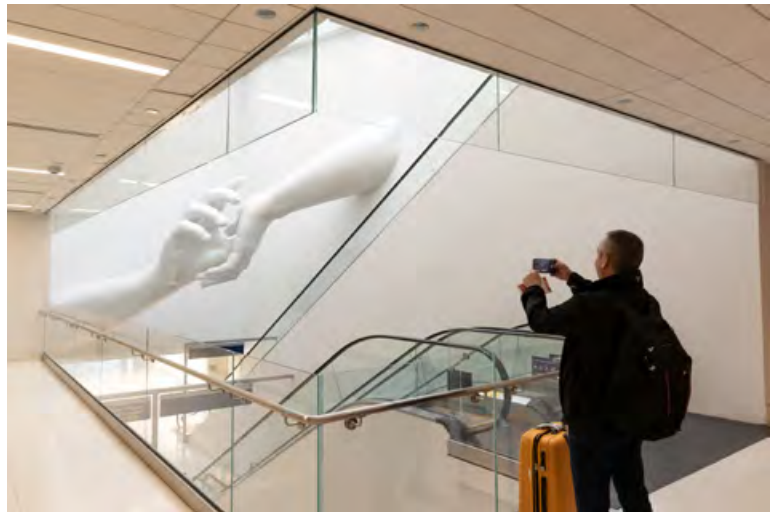
■ The characters were finished with a cartoonesque matte paint finish, and sent off for Disney fans around the world to enjoy!



REACH

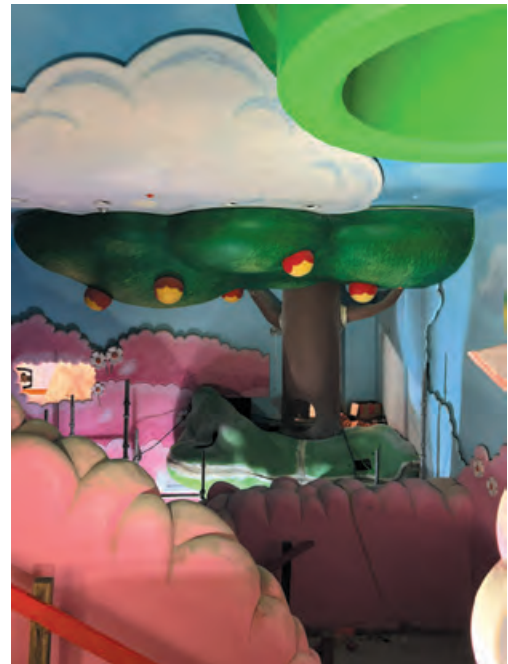


■ An immense 60' sculpture, "REACH", hangs proudly in O'Hare Airport. L3DFX was chosen as the most qualified fabricator to develop the complex design, build, and installation strategies. Our team loved the opportunity to be a part of something that will forever help welcome visitors to Chicago.



UNIVERSAL'S SUPER NINTENDO WORLD, CALIFORNIA

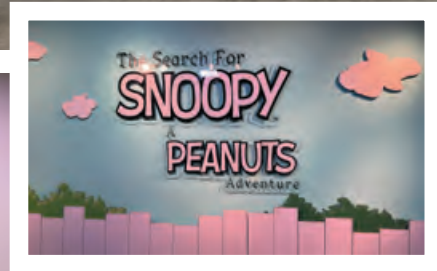
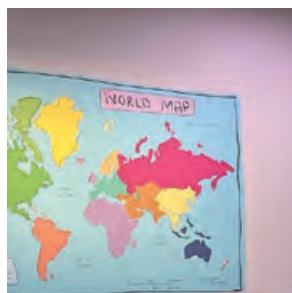
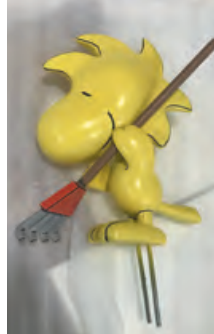
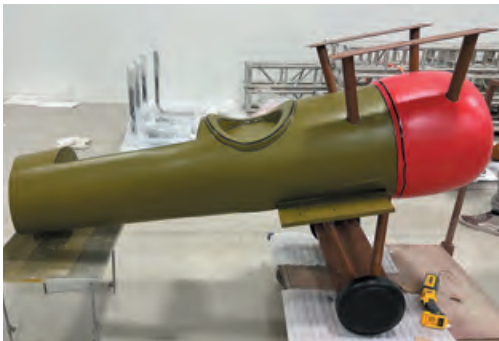
Fiberglass Fabrication



■ L3DFX partnered with Scenario to bring larger-than-life Mario Kart imagery to Universal's Super Nintendo World.

THE SEARCH FOR SNOOPY

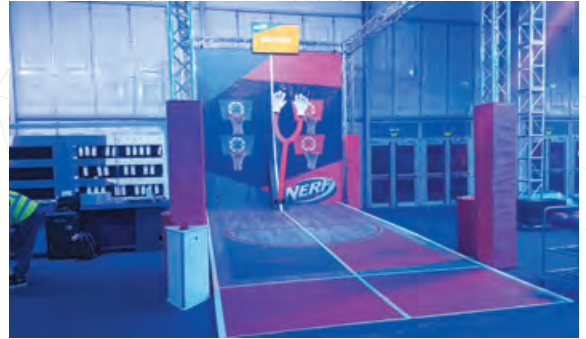
A Peanuts Adventure



- We loved bringing the nostalgic world of Peanuts out of the comics and into reality. This traveling experience is jam packed with Instagram-able moments and interactives for young and mature fanatics alike.



NERF CHALLENGE





■ The NERF Challenge was a unique opportunity to combine all of our mechanical and electronics engineering experience to design over a dozen interactive stations; when integrated, they created the ultimate game arena.

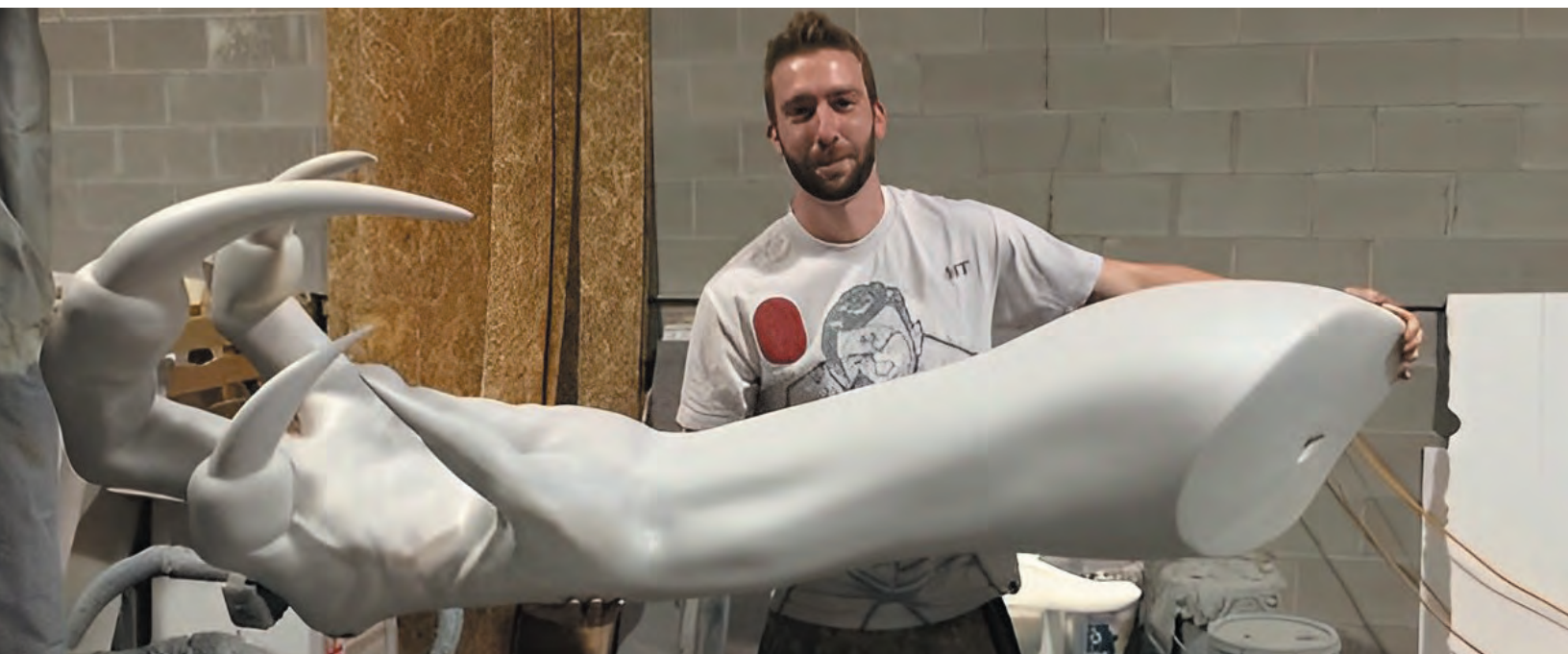
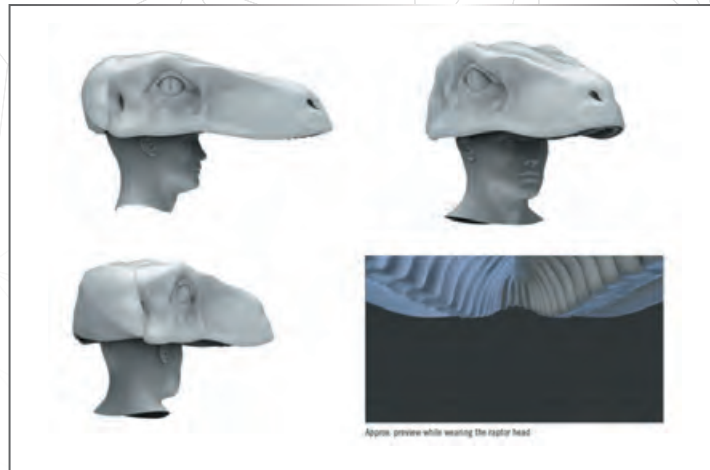
TRANSFORMERS



■ Merlin's sarcophagus featured in Transformers, "The Last Knight."

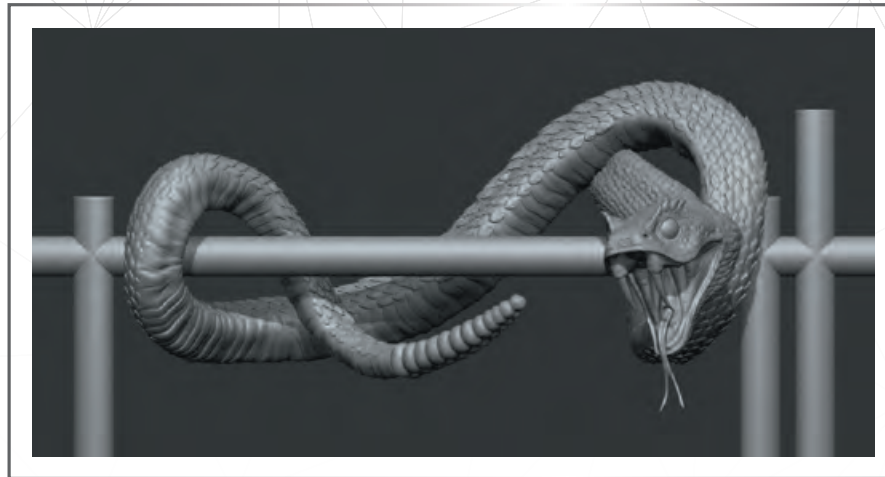
JURASSIC WORLD

- Helmets designed for the velociraptor creature puppeteers to assist in CGI-tracking.



- The ultimate dino, we sculpted the D-Rex claw and foot that's seen in the film.

SIX FLAGS SIDEWINDER SAFARI



■ Our digital sculpt.



■ Hardcoat foam with structural supports and outdoor UL-rated lighting integrated.



KENNYWOOD AREA 412 AND SPINVASION ENTRY



- For this particular opportunity with the Kennywood team, we used their baseline ideas (cotton candy-loving aliens, a battle with invading bots) and extended it so much further, bringing personality to the storyline. The results were over-the-moon and beyond.

DR. SEUSS EXPERIENCE



■ We loved creating theming and interactives for the whimsical, wonderful world of Dr. Seuss. This experience was complete with a present fishing conveyor belt to help the Grinch's heart grow and pneumatic toy ejector that added to the Cat in the Hat's mess.

CARNIVAL CRUISE

Patch the Pumpkin Pirate



■ We brought Patch the Pumpkin Pirate from concept to creation and then replicated him for every Carnival Cruise Liner. We also paired this friendly Halloween character with a storybook animation perfect for the high seas.



KIDSWORK CHILDREN'S MUSEUM

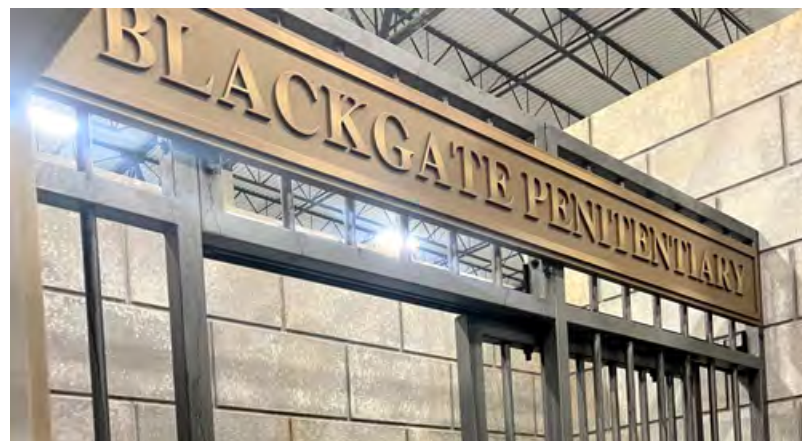
New Lenox, IL



■ L3DFX was excited to stretch our creative muscles in fully conceiving, fabricating, and installing all exhibits and elements for the new KidsWork Children's Museum in New Lenox, IL.

ESCAPOLOGY

Batman Escape Rooms



■ Our partnership with Escapology lets us bring the Caped Crusader's world to life, from Blackgate Penitentiary to the Batcave itself, in this series of escape rooms built across the country.

UNIVERSAL PARADE FLOAT

Trolls

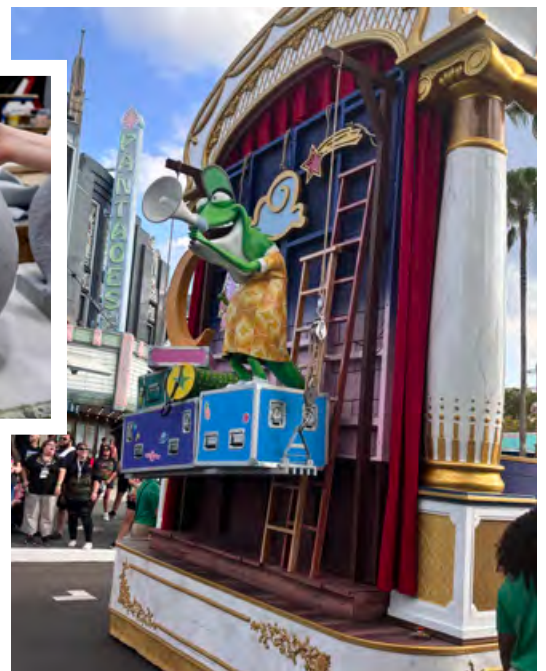


■ Under our wonderful partners at TAIT, L3DFX was honored to fully create two eye-popping floats for the Universal Mega Movie Parade—Trolls, and Sing. Our fabrication and paint experts truly were delighted to spotlight our skills and bring these intricate projects to life!



UNIVERSAL PARADE FLOAT

Sing



NFL/SPORTS TEAMS

Washington Commanders • Minnesota Vikings • Cleveland Browns
Houston Texans • Baltimore Ravens • Seattle Seahawks • US Men and Women's Soccer



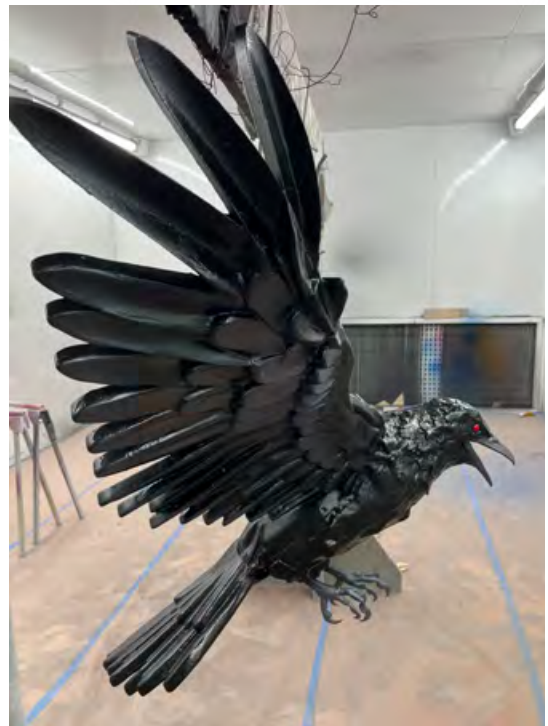
■ This is where fan central meets fabrication! It's our passion to provide memorable experiences, no matter who you root for.



■ Our friends at Image Engineering asked us to create an indestructible amp to house their CO₂ effects.



■ We brought Game Day Central up to the next level with a custom stage design and talent set for NRG stadium.



■ No matter the sport or the venue, we can “3D-ify” a team’s brand to create photo worthy fan experiences.



STADIUM NETWORK STUDIO

- Stadium Network tasked us to redesign their studio to combine all the best parts of sports fandom. Between the reactive lighting in the window façades and the wooden jigsaw feature wall, the stadium team was thrilled to call this new set home.



- Custom Anchor desk with Integrated RGB LED table.



CHICAGO CUBS MARQUEE STUDIO EXPERIENCE



■ A whole lot of hometown pride for our beloved Chicago Cubs! We had a fan-fueled time creating the studio for the Wrigley Field's Marquee Network Experience.

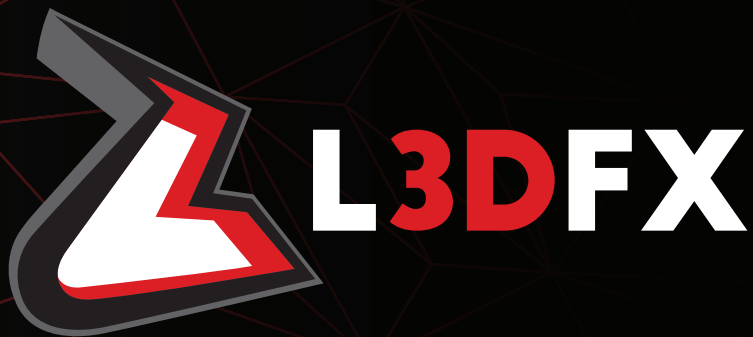




■ Photo ops based on classic imagery from Wrigley Field.



DESIGN. CREATE. DELIVER




CONTACT OUR TEAM

FOR YOUR NEXT PROJECT NEEDS





FOR DIRECT INQUIRIES AND QUESTIONS:

Emily Popovich, Chief of Sales and Business Development
emily@L3DFX.com • 703.850.4115

640 Remington Blvd., Suite C • Bolingbrook, IL 60440

 L3DFX.com  Create@L3DFX.com  815.727.5454

FOLLOW US ON SOCIAL MEDIA

 www.linkedin.com/company/L3DFX
 www.facebook.com/L3DFX/
 www.instagram.com/L3DFX__/
 twitter.com/L3DFX